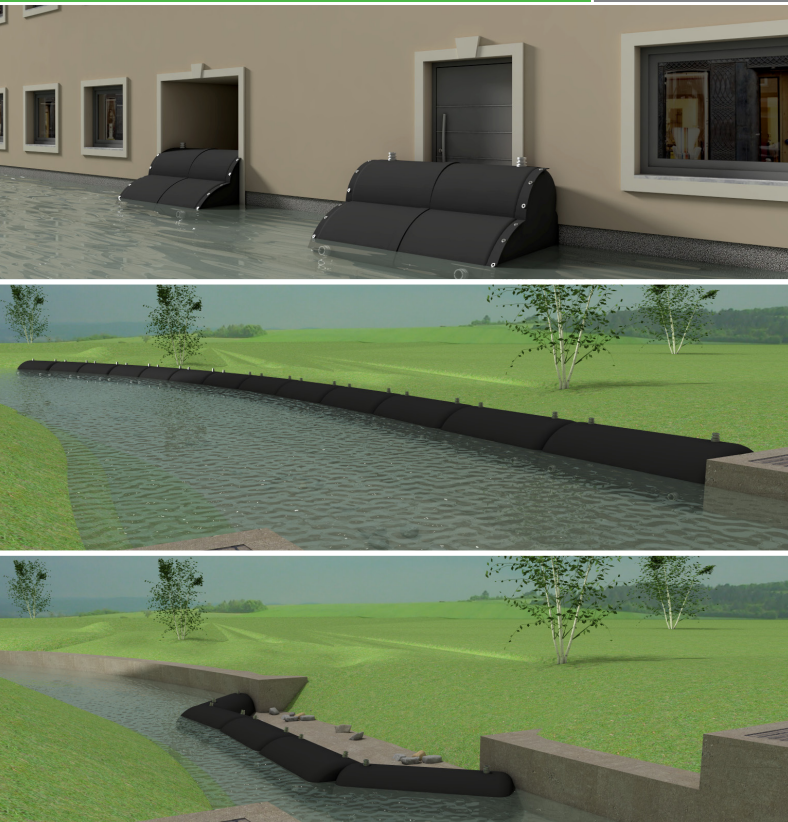
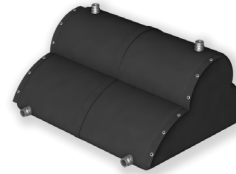


# SAVATECH WATERWALLS

Tested by  
**US Army Corps  
of Engineers**  
Engineer Research and  
Development Center



## Waterwalls vs. Sandbags



1 Waterwall

=



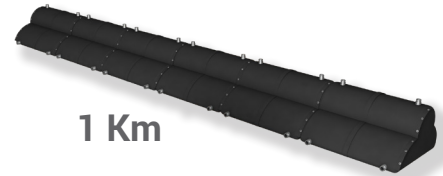
300 Sandbags



10 Waterwalls



300 Sandbags



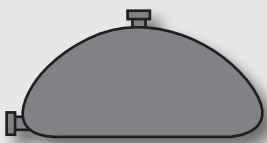
1 Km

250 Waterwalls = 75.000 Sandbags



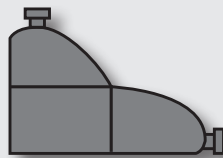
Waterwalls are precisely engineered emergency barriers against the incursion of flood waters. They replace conventional sandbags, and are more durable, economical and much easier to handle, which is of utmost importance in an emergency situation.

Protect your infrastructure with different types of waterwalls:



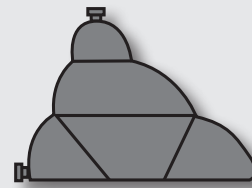
**Type A:**

- Free standing design
- Floodwater barrier protection
- For placement along riverbanks and keeping streams in line
- Protecting individual structures or scapes of land



**Type B:**

- Shaped for placing against a structured wall
- Statically supported design with back to back option
- Ideally for protecting door-ways, garages, air wells, gaps between houses,...



**Type C:**

- The largest in size
- Very customizable, depending on the needs
- Very durable in extreme conditions

